

# EONMETALL

## EN76.2 PALLET RACKING SERIES

---

Visit us at :

[WWW.EONMETALL.COM](http://WWW.EONMETALL.COM)

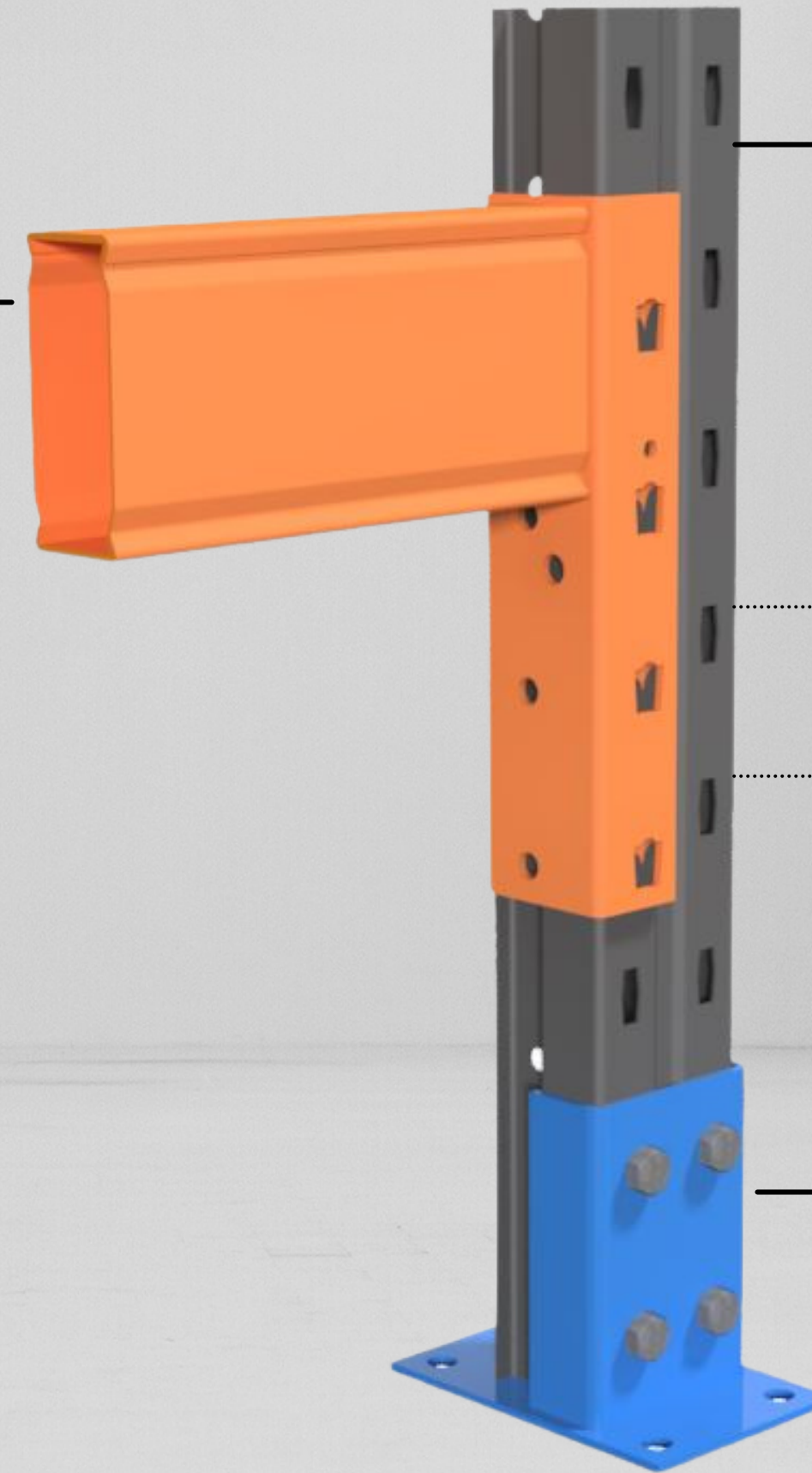
EMAIL: [INFO@EONMETALL.COM](mailto:INFO@EONMETALL.COM)





## BEAM

Main component that carrying the pallets & goods. All beams is hooked into racking upright which simplified installation process. With the safety lock installed, it can prevent the beams dislodged from the upright.



## RACKING UPRIGHT

Uprights made of high tensile steel that comply to AS4084 & EN15512 with classic pitch of 76.2mm suitable for all kinds of warehouse applications.

76.2mm Pitch

## HD BASEPLATE

Ultimate load transfer from racking to ground. It is important to design a correct baseplate to ensure safety standard of the pallet racking.

# EN76.2 RACKING SERIES

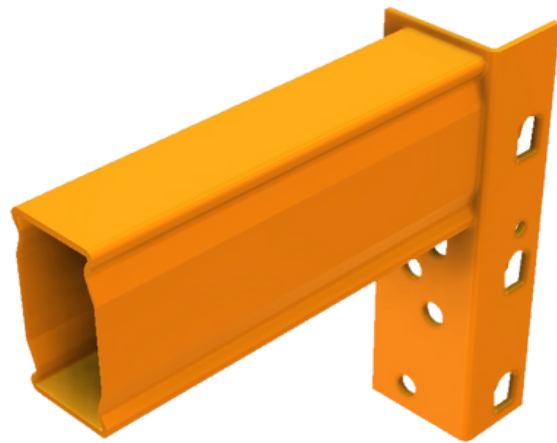
The classic 76.2mm pitches racking has been introduce with high tensile steel to improve load capacity. With comply of AS4084 & EN15512, EN76.2 is safe for type of warehouse pallet racking products.



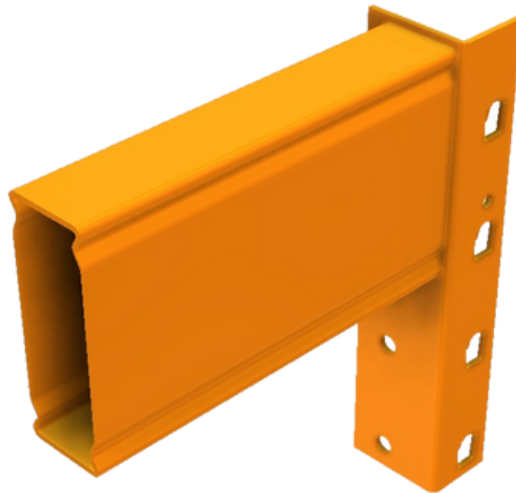
PRODUCT RANGE

# WIDE RANGE OF COMPONENT PROFILE

Eonmetall offers wide product range to suit all kinds of loading activity in warehouse storage solutions. Besides, the wide range of component profiles also help customer to achieve best cost efficient while customer invest in warehouse racking.



Box Beam 80/90/100  
(3Hook)



Box Beam 120/140/160  
4Hook



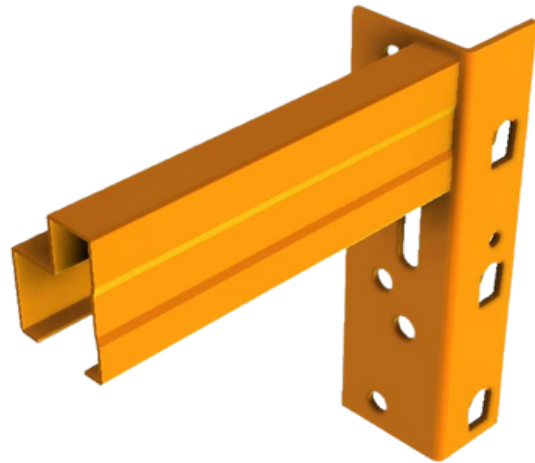
Upright 90  
(Painted)



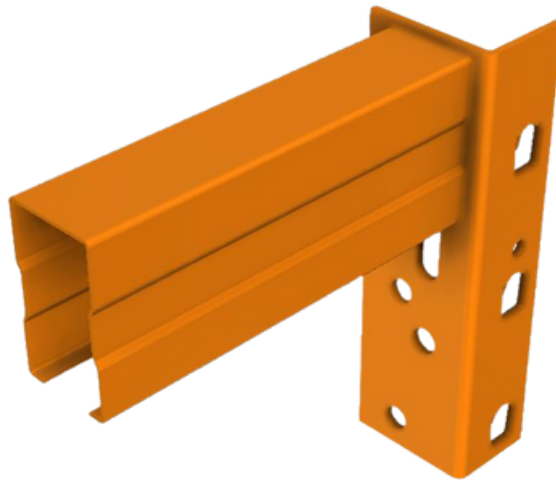
Upright 100  
(Painted)



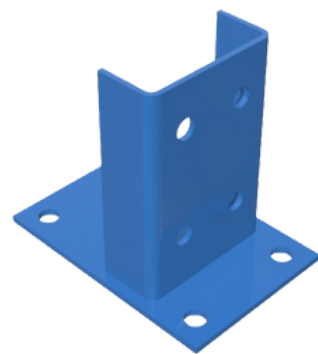
Pre-Galvanizing  
Upright



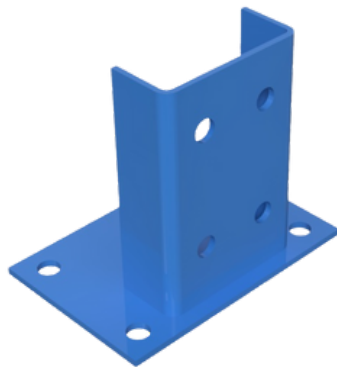
Step Beam



Open Beam



HeavyDuty  
Baseplate



Narrow Aisle  
Baseplate



Hot Dip Galvanizing  
Baseplate

**\*Notes:** Standard Baseplate are available for low load bearing

**EONMETALL GROUP BERHAD**

Lot 1258 & 1259, Mk. 12, Jalan Seruling,  
Kawasan Perusahaan Valdor,  
14200 Sungai Bakap, Penang, Malaysia.

**TEL :** +604 582 8323

**FAX :** +604 582 1525

**EMAIL :** info@eonmetall.com

**SPACE  
MAKER**

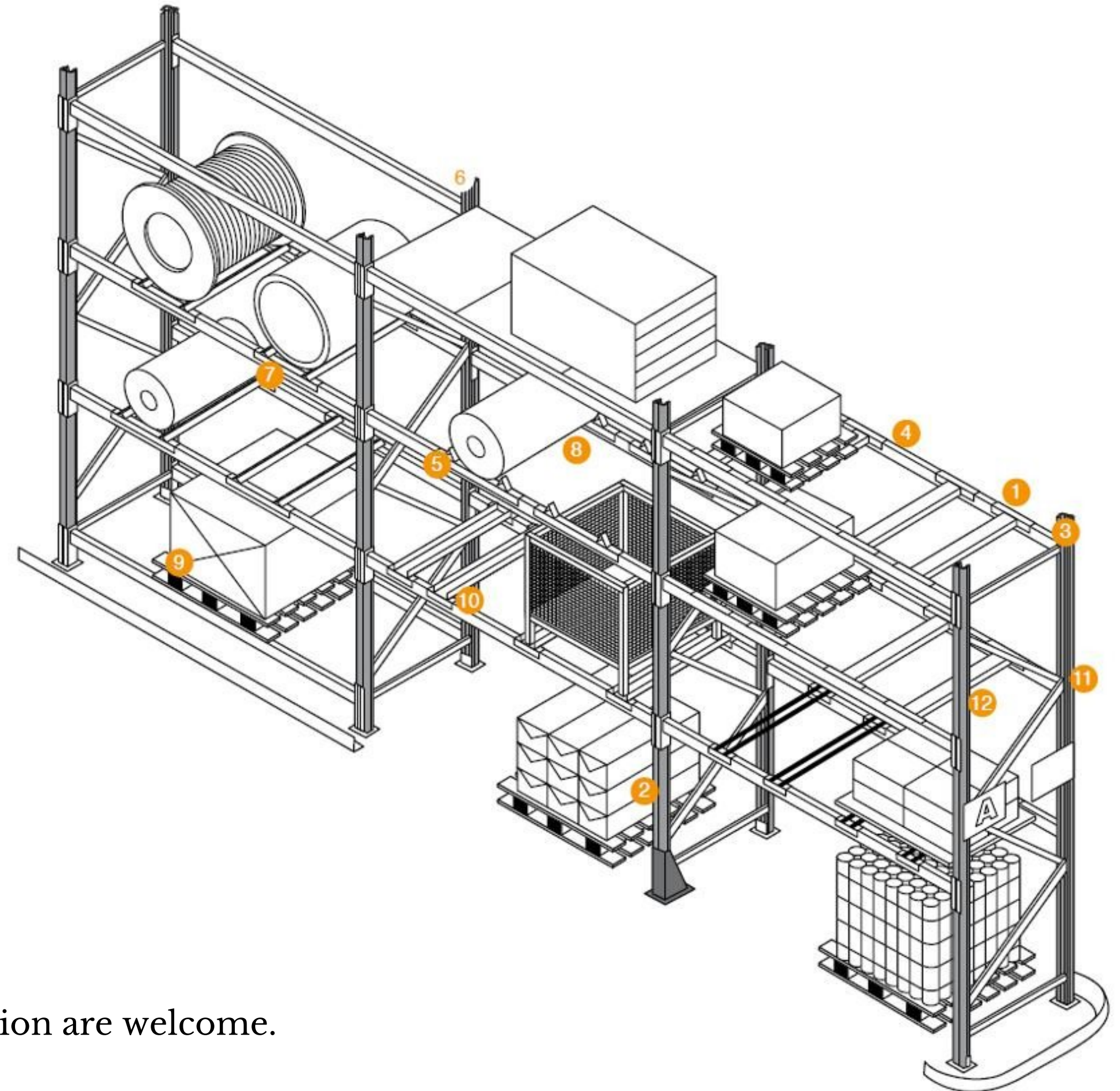


## ACCESSORIES

### COMPLETE RANGE OF ACCESSORIES

1. Pallet Support Bar
2. Column Guard
3. Upright
4. Bay Insert
5. Skid Channel
6. Decking - Plywood/Steel Deck
7. Coil Support Bars
8. Barrel Chocks
9. Guide Rail (For VNA)
10. Baseplate
11. Signboard
12. Row Signage

**\*Notes:** All accessories are available upon request. Customization are welcome.

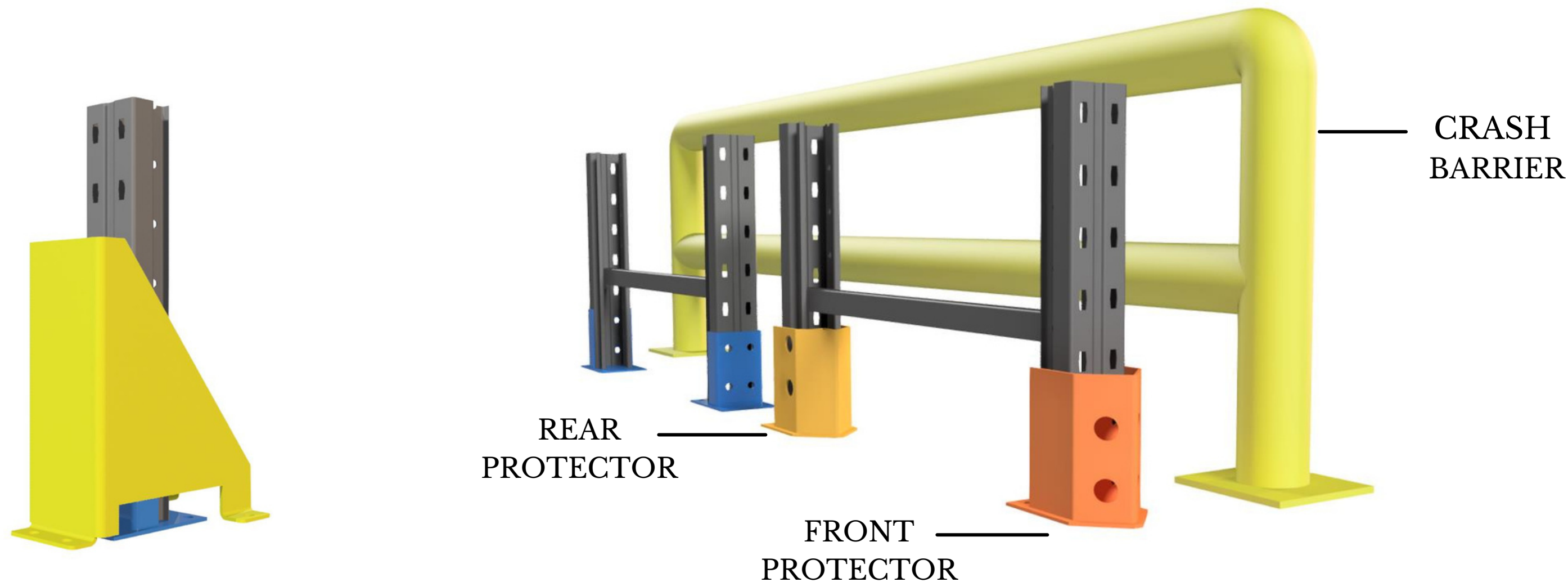




# SAFETY & PROTECTIONS

## Everyone Deserves a Safe Workplace

Eonmetall concerns everyone working in warehouse where forklift/reach truck is operate daily and creates potential safety hazard, safety accessories is deemed important to install in your warehouse.



**STANDARD  
COLUMN GUARD**

**DOUBLE DEEP RACKING  
RECOMMENDED PROTECTION**

We care for your warehouse safety, do check with our sales representor for the protection suitable for your warehouse



### **EONMETALL GROUP BERHAD**

Lot 1258 & 1259, Mk. 12, Jalan Seruling,  
Kawasan Perusahaan Valdor,  
14200 Sungai Bakap, Penang, Malaysia.

**TEL** : +604 582 8323

**FAX** : +604 582 1525

**EMAIL** : [info@eonmetall.com](mailto:info@eonmetall.com)