

# EONMETALL

## EN76.2

### PALLET RACKING SERIES

---

Visit us at :

[WWW.EONMETALL.COM](http://WWW.EONMETALL.COM)

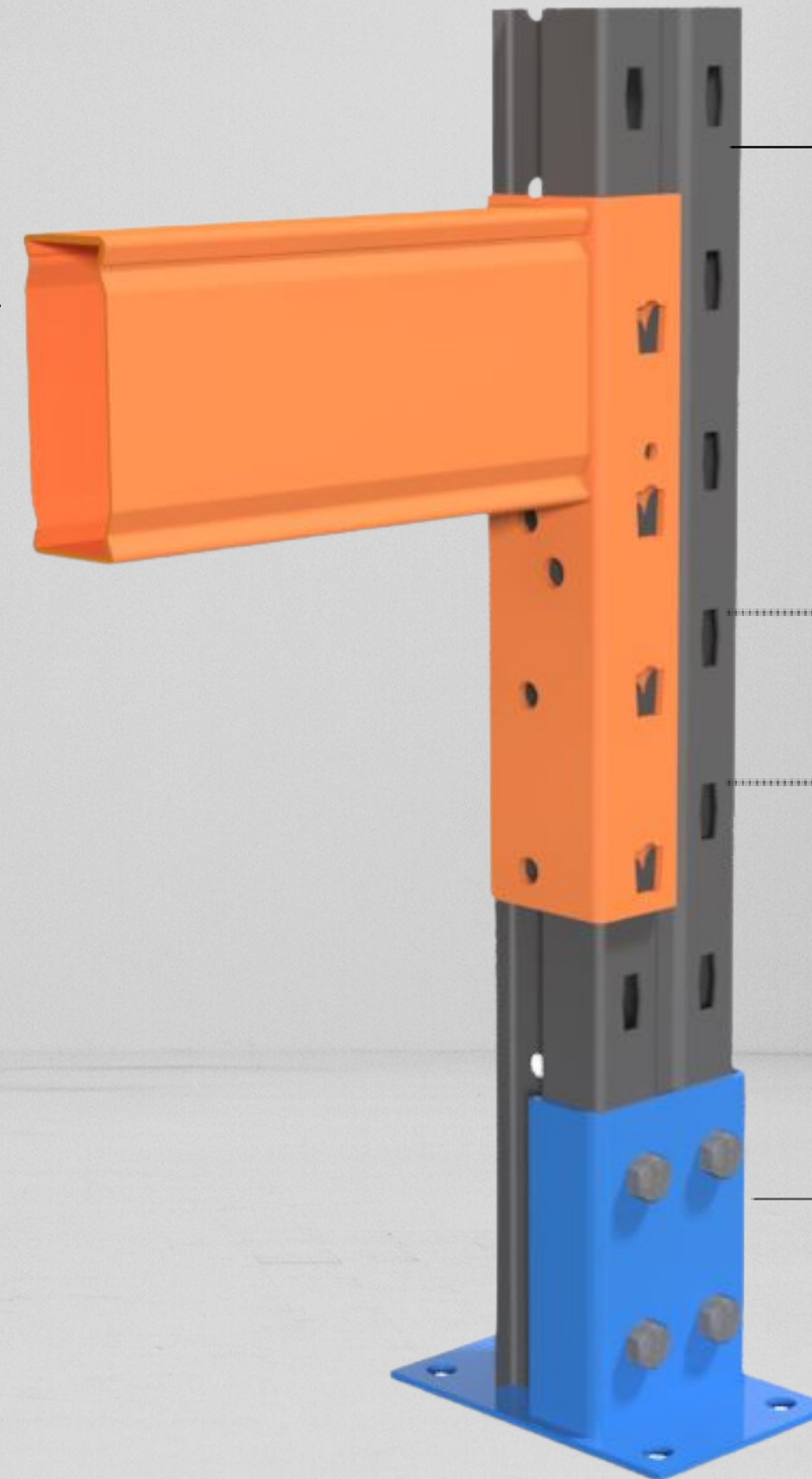
EMAIL: [INFO@EONMETALL.COM](mailto:INFO@EONMETALL.COM)





## BEAM

Main component that carries pallets & goods. All beams are hooked onto racking upright which simplify installation process. With the safety lock installed, it can prevent beams dislodged from the upright.



## RACKING UPRIGHT

Uprights made of high tensile steel which comply to AS4084 & EN15512 with classic pitch of 76.2mm are suitable for all kinds of warehouse applications.

## EN76.2 RACKING SERIES

The classic 76.2mm pitch racking has been introduced with high tensile steel to improve load capacity. With the compliance to AS4084 & EN15512, EN76.2 is safe for all type of warehouse pallet racking products.

## HD BASEPLATE

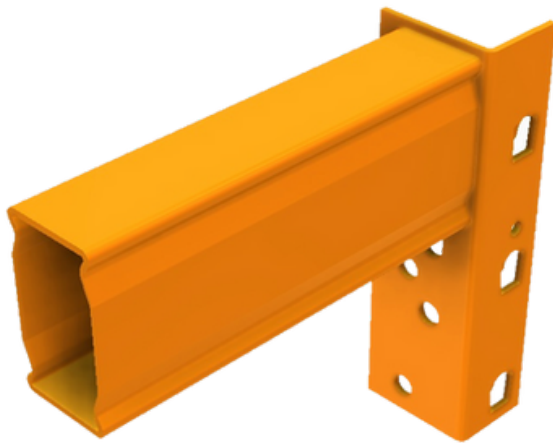
Ultimate load transfer from racking to ground. It is critical to design a correct baseplate to ensure safety standard of the pallet racking.



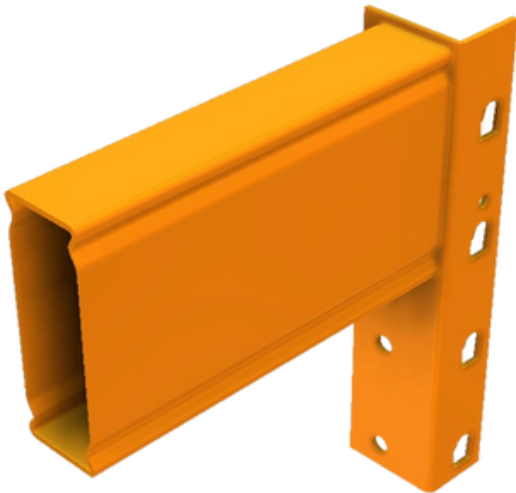
PRODUCT RANGE

# WIDE RANGE OF COMPONENT PROFILE

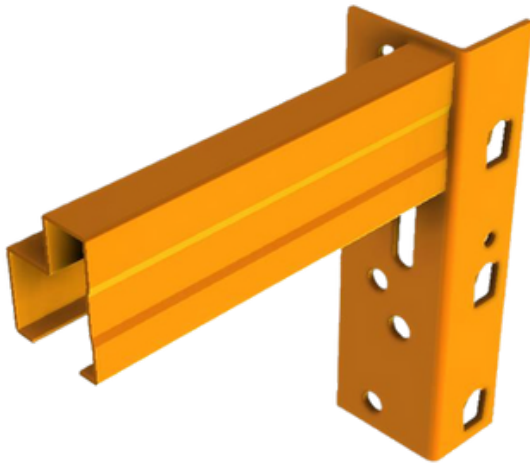
Eonmetall offers wide product range to suit all kinds of loading activities in warehouse storage solutions. Besides, the wide range of component profiles also assist customer to achieve best cost effectiveness when customer invest in warehouse racking.



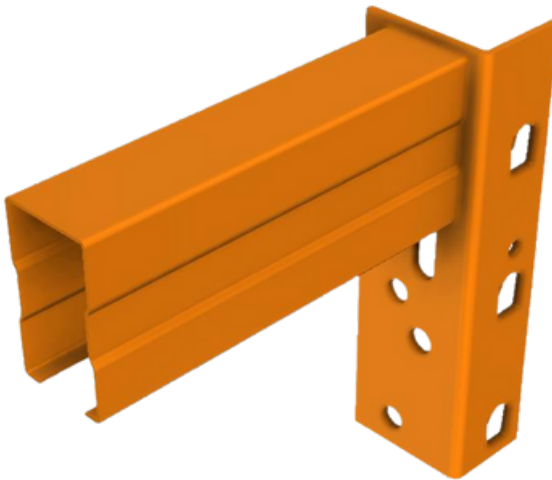
Box Beam 80/90/100  
(3Hook)



Box Beam 120/140/160  
4Hook



Step Beam



Open Beam



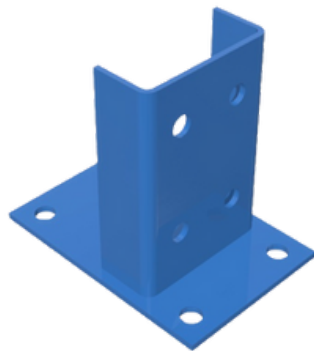
Upright 90  
(Painted)



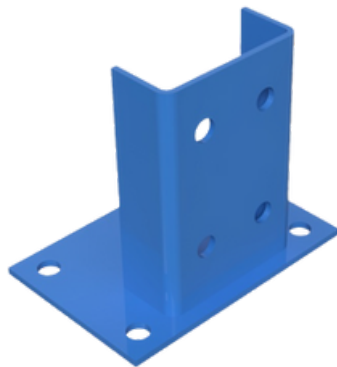
Upright 100  
(Painted)



Pre-Galvanizing  
Upright



HeavyDuty  
Baseplate



Narrow Aisle  
Baseplate



Hot Dip Galvanizing  
Baseplate

**\*Notes:** Standard Baseplate are available for low load bearing

**EONMETALL GROUP BERHAD**

Lot 1258 & 1259, Mk. 12, Jalan Seruling,  
Kawasan Perusahaan Valdor,  
14200 Sungai Bakap, Penang, Malaysia.

**TEL :** +604 582 8323

**FAX :** +604 582 1525

**EMAIL :** info@eonmetall.com

**SPACE  
MAKER**

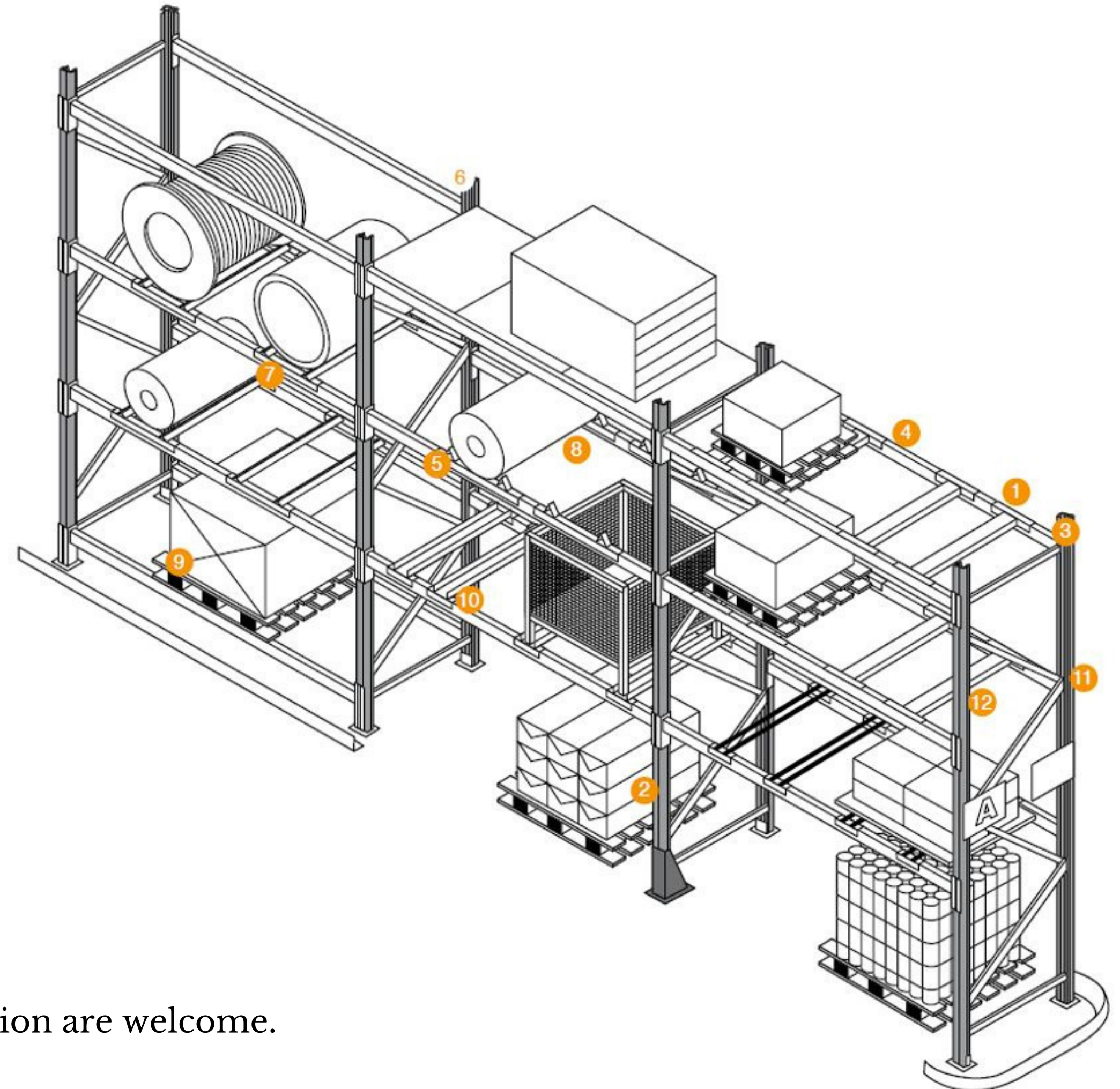


## *ACCESSORIES*

# COMPLETE RANGE OF ACCESSORIES

1. Pallet Support Bar
2. Column Guard
3. Upright
4. Bay Insert
5. Skid Channel
6. Decking - Plywood/Steel Deck
7. Coil Support Bars
8. Barrel Chocks
9. Guide Rail (For VNA)
10. Baseplate
11. Signboard
12. Row Signage

**\*Notes:** All accessories are available upon request. Customization are welcome.

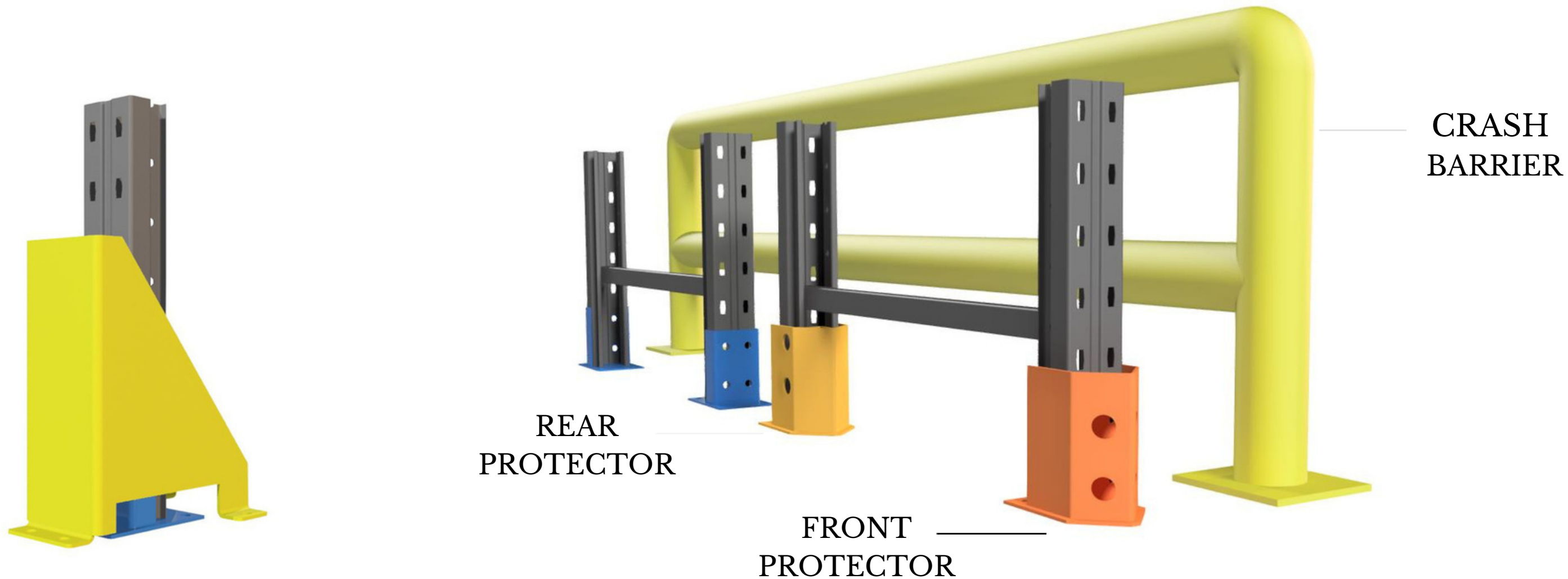




# SAFETY & PROTECTIONS

## Everyone Deserves a Safe Workplace

Eonmetall design ensure safe working for everyone working in warehouse where forklift/reach truck that operates daily creates potential safety hazard. Thus, safe designed accessories is deemed important to be installed in your warehouse.



**STANDARD  
COLUMN GUARD**

**DOUBLE DEEP RACKING  
RECOMMENDED PROTECTION**

We care for your warehouse safety, do check with our sales representative for maximum protection for your warehouse.



**EONMETALL GROUP BERHAD**

Lot 1258 & 1259, Mk. 12, Jalan Seruling,  
Kawasan Perusahaan Valdor,  
14200 Sungai Bakap, Penang, Malaysia.

**TEL** : +604 582 8323

**FAX** : +604 582 1525

**EMAIL** : [info@eonmetall.com](mailto:info@eonmetall.com)